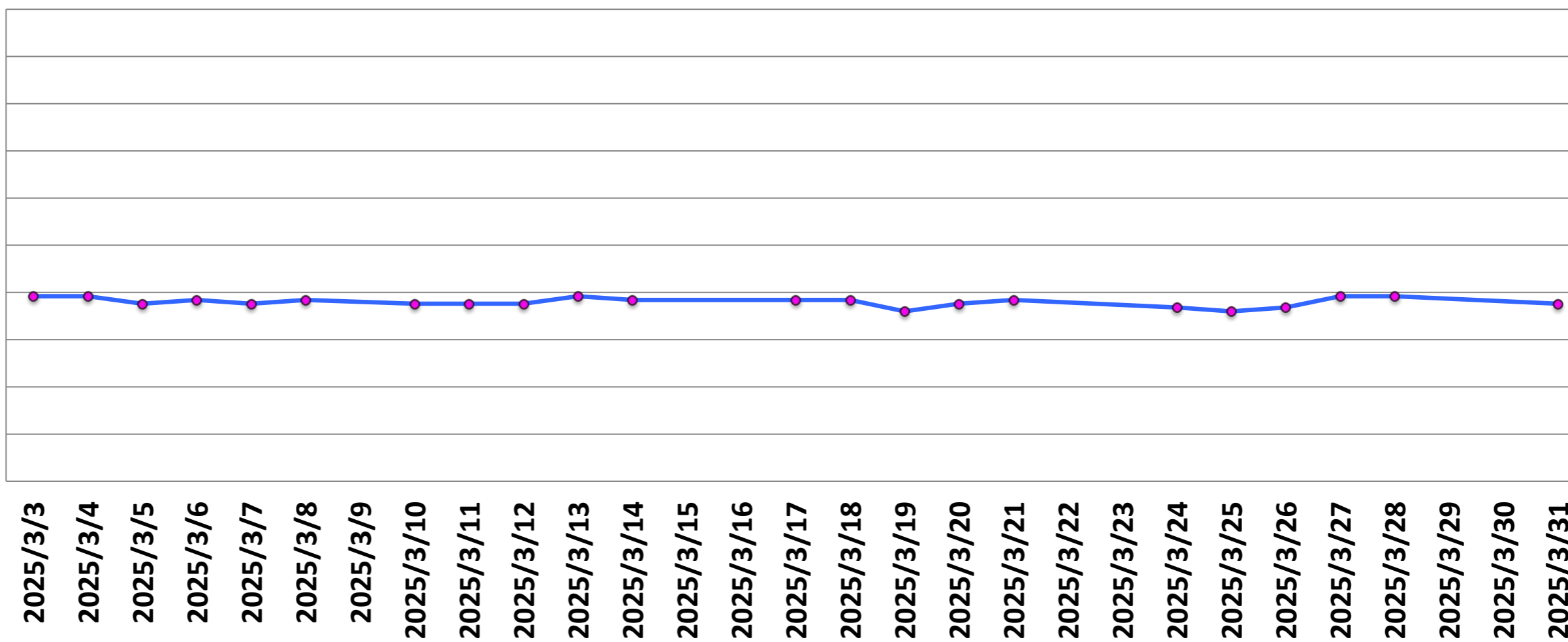


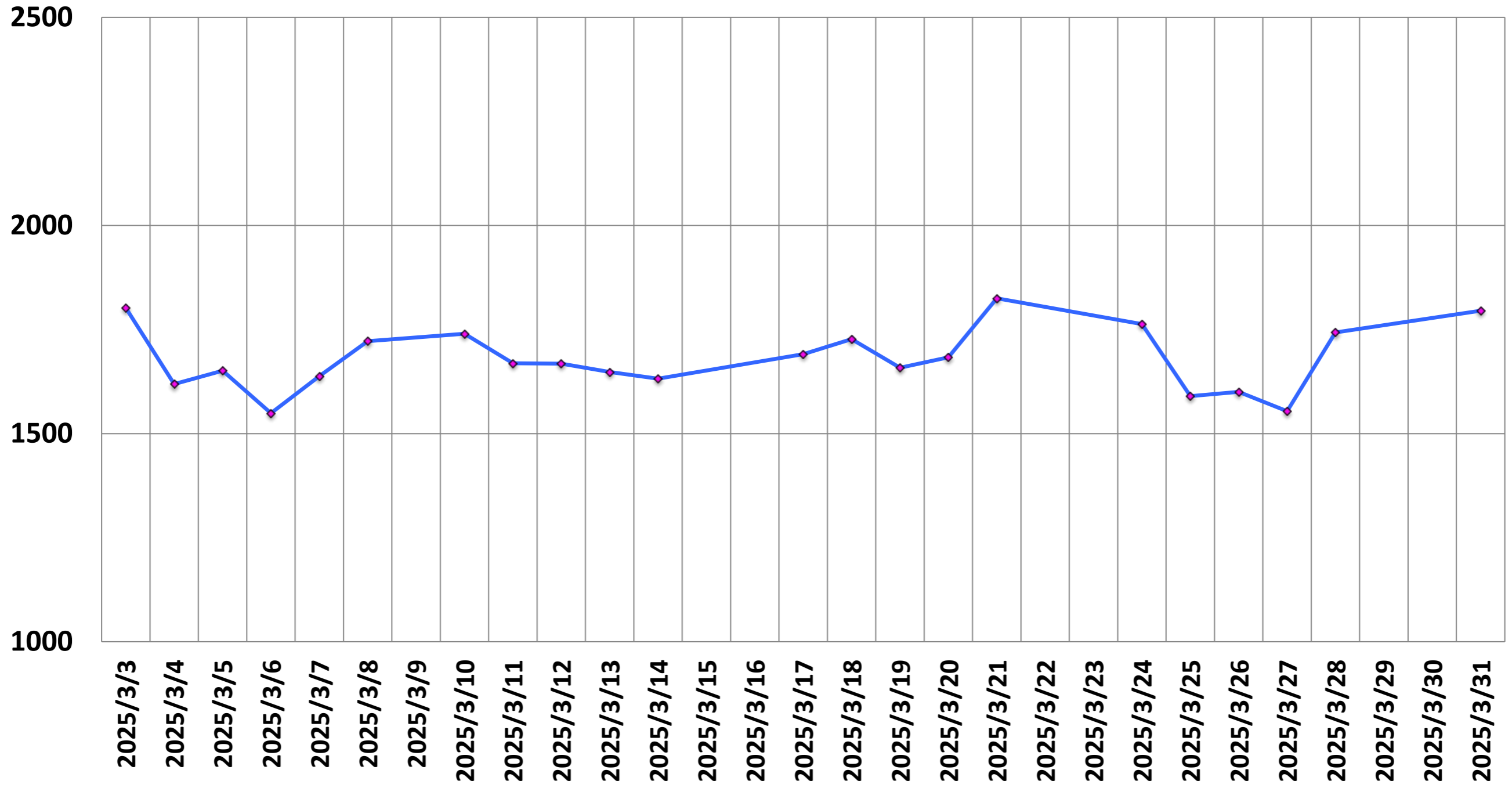
(MHz)

Central Frequency (MHz)

123.2560
123.2559
123.2558
123.2557
123.2556
123.2555
123.2554
123.2553
123.2552
123.2551
123.2550



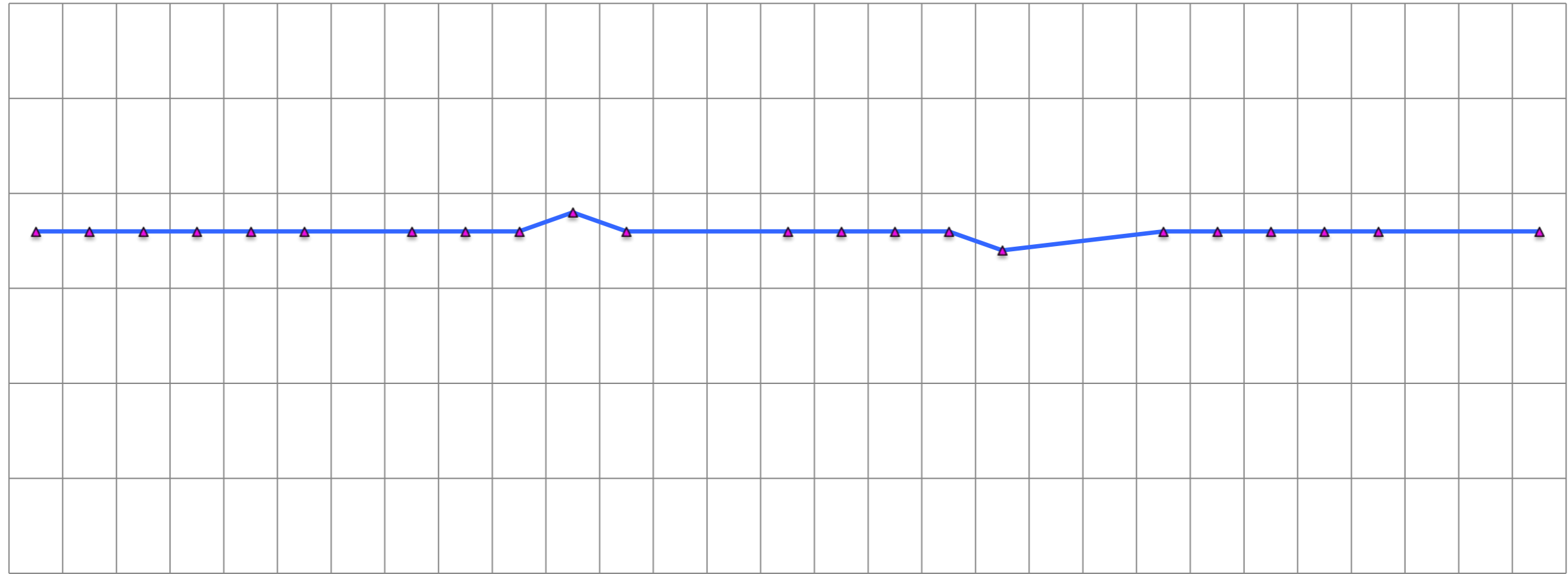
SNR



P-P/mean of single voxel (%)

(%)

0.30
0.25
0.20
0.15
0.10
0.05
0.00

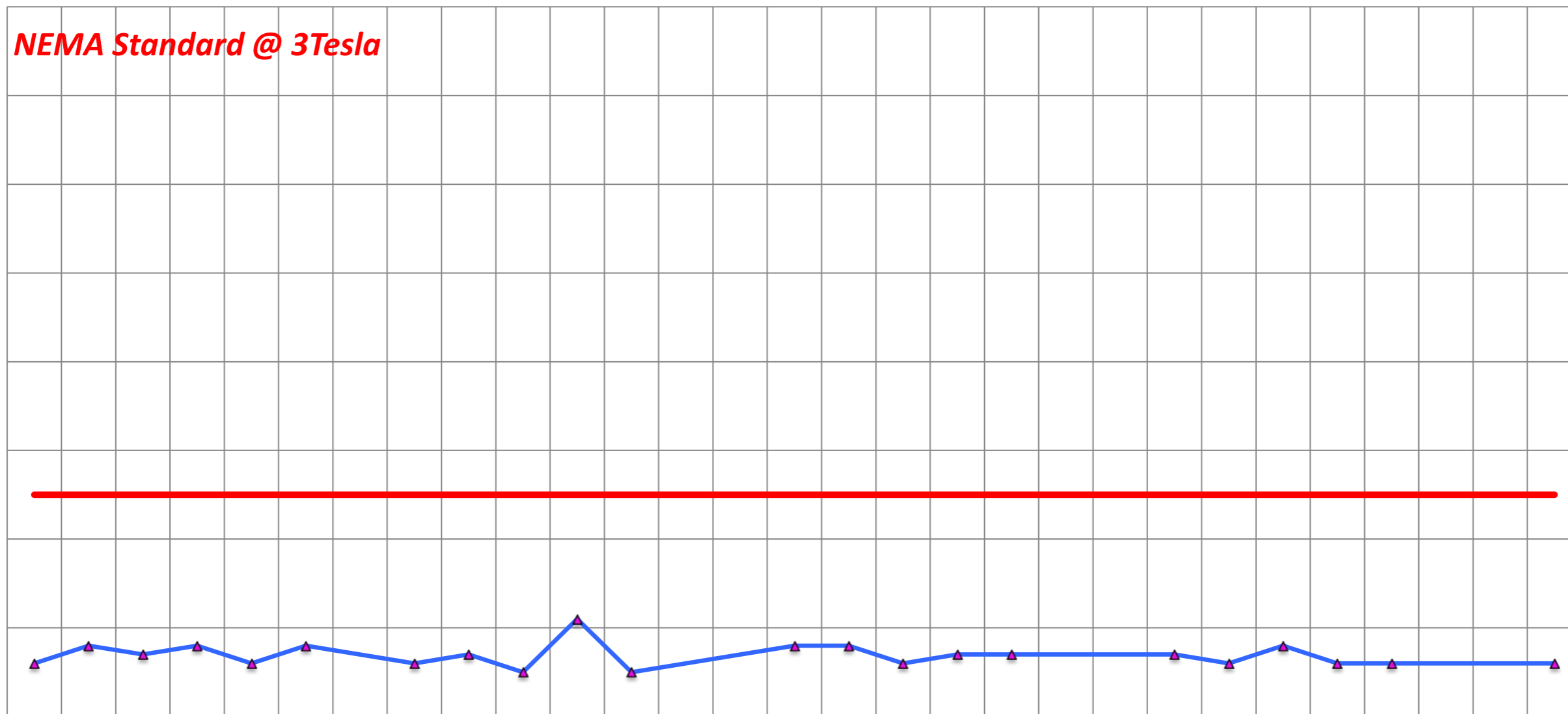


2025/3/3
2025/3/4
2025/3/5
2025/3/6
2025/3/7
2025/3/8
2025/3/9
2025/3/10
2025/3/11
2025/3/12
2025/3/13
2025/3/14
2025/3/15
2025/3/16
2025/3/17
2025/3/18
2025/3/19
2025/3/20
2025/3/21
2025/3/22
2025/3/23
2025/3/24
2025/3/25
2025/3/26
2025/3/27
2025/3/28
2025/3/29
2025/3/30
2025/3/31

p2p/mean (%)

(%)

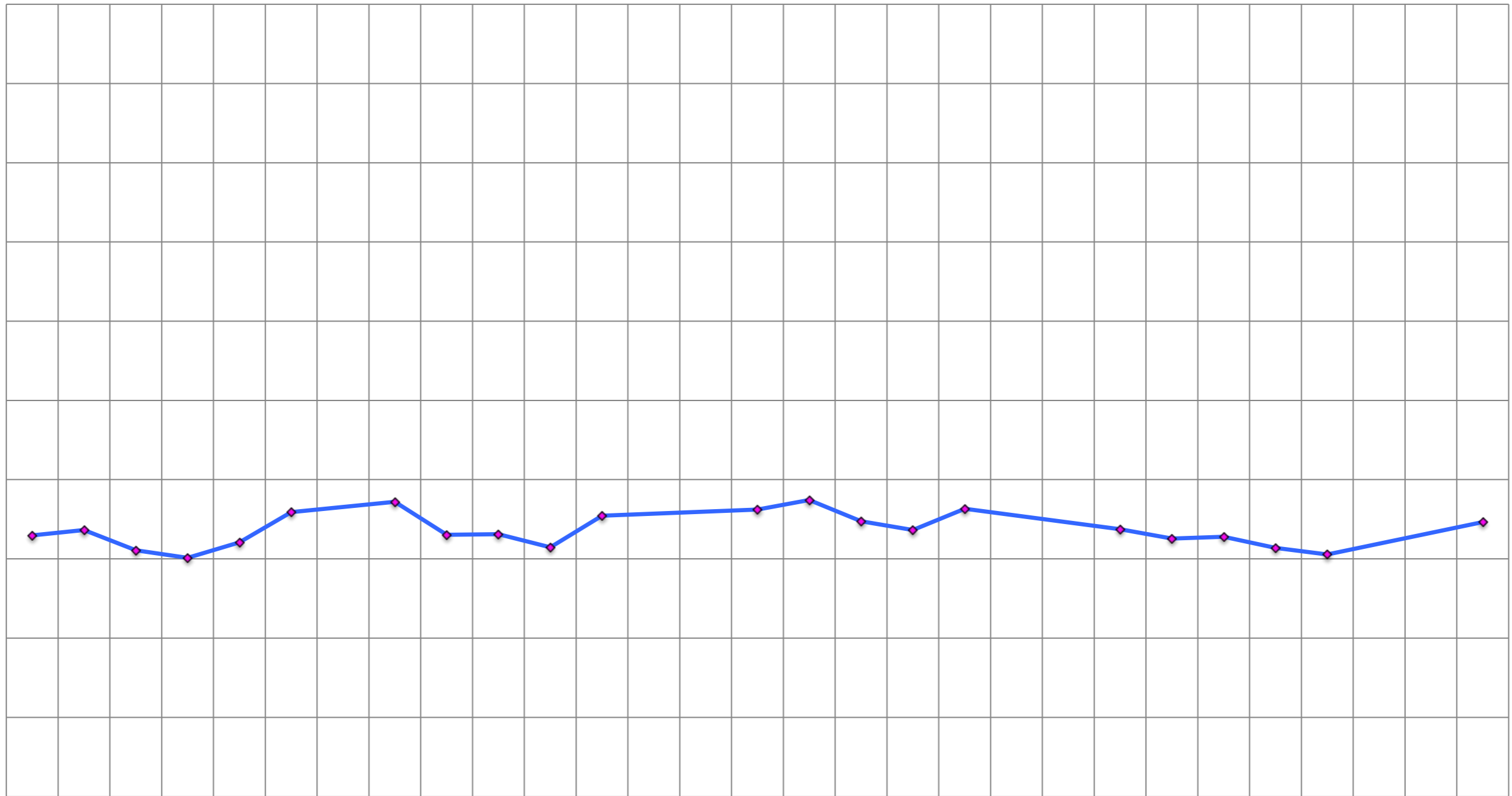
0.8
0.7
0.6
0.5
0.4
0.3
0.2
0.1
0



2025/3/3
2025/3/4
2025/3/5
2025/3/6
2025/3/7
2025/3/8
2025/3/9
2025/3/10
2025/3/11
2025/3/12
2025/3/13
2025/3/14
2025/3/15
2025/3/16
2025/3/17
2025/3/18
2025/3/19
2025/3/20
2025/3/21
2025/3/22
2025/3/23
2025/3/24
2025/3/25
2025/3/26
2025/3/27
2025/3/28
2025/3/29
2025/3/30
2025/3/31

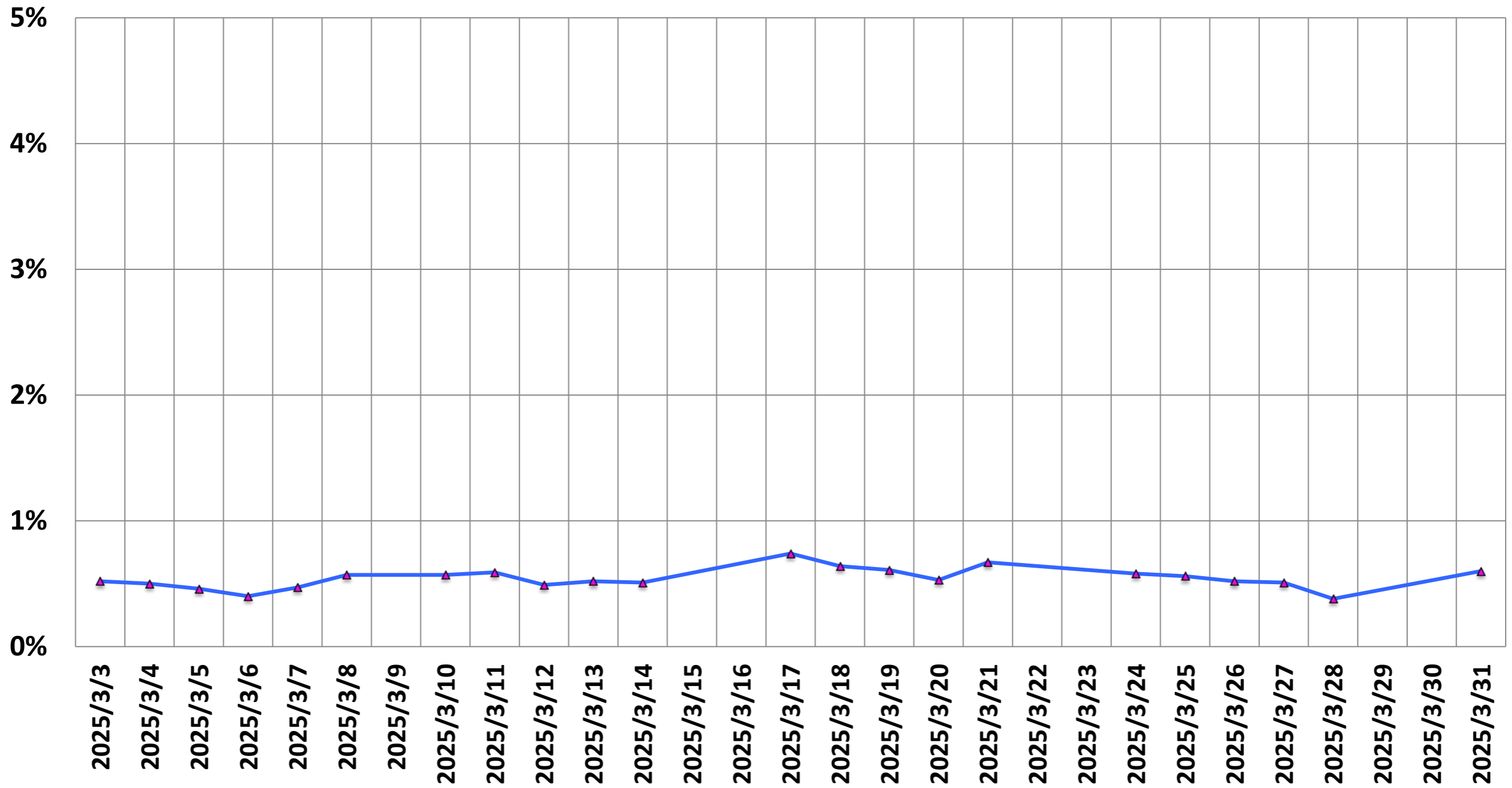
SGR

200.00
190.00
180.00
170.00
160.00
150.00
140.00
130.00
120.00
110.00
100.00



2025/3/3
2025/3/4
2025/3/5
2025/3/6
2025/3/7
2025/3/8
2025/3/9
2025/3/10
2025/3/11
2025/3/12
2025/3/13
2025/3/14
2025/3/15
2025/3/16
2025/3/17
2025/3/18
2025/3/19
2025/3/20
2025/3/21
2025/3/22
2025/3/23
2025/3/24
2025/3/25
2025/3/26
2025/3/27
2025/3/28
2025/3/29
2025/3/30
2025/3/31

Drift Rate



He Level (%)

He (%)

80.0

75.0

70.0

65.0

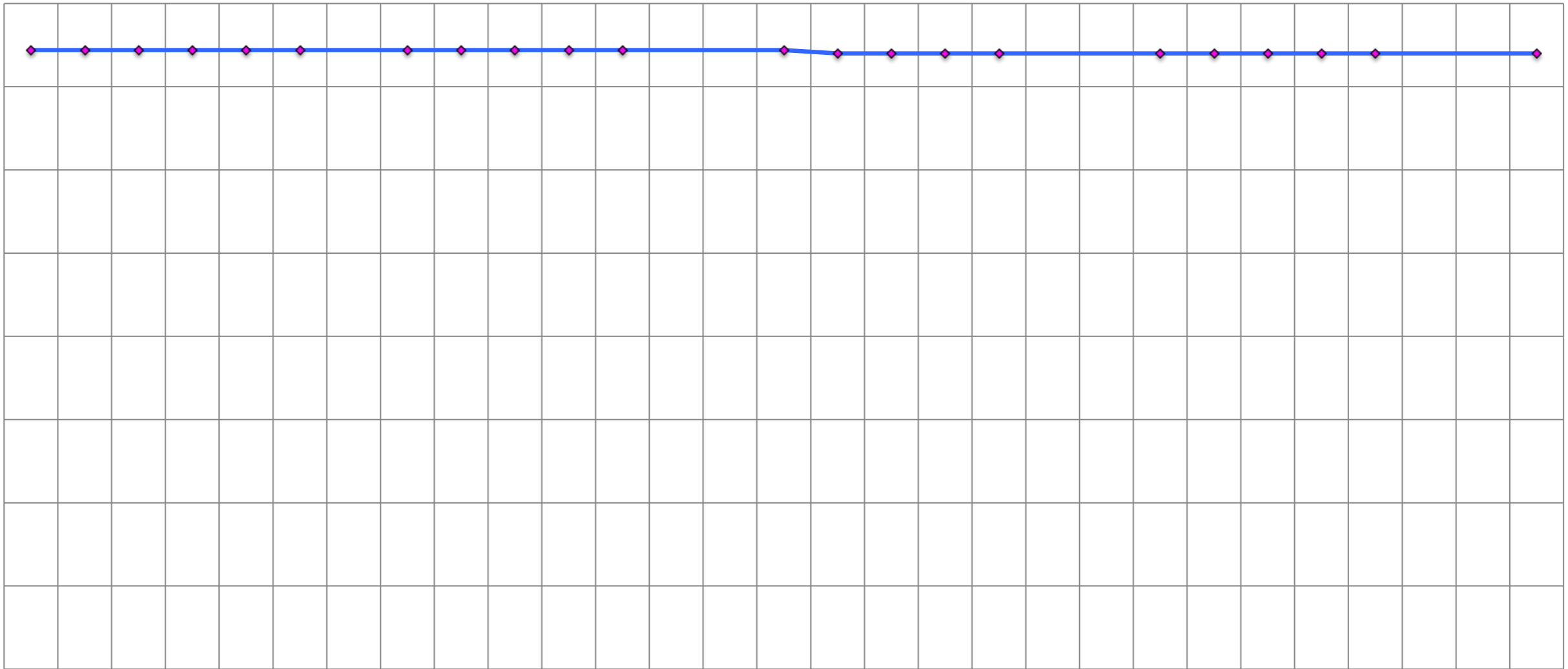
60.0

55.0

50.0

45.0

40.0



2025/3/3

2025/3/4

2025/3/5

2025/3/6

2025/3/7

2025/3/8

2025/3/9

2025/3/10

2025/3/11

2025/3/12

2025/3/13

2025/3/14

2025/3/15

2025/3/16

2025/3/17

2025/3/18

2025/3/19

2025/3/20

2025/3/21

2025/3/22

2025/3/23

2025/3/24

2025/3/25

2025/3/26

2025/3/27

2025/3/28

2025/3/29

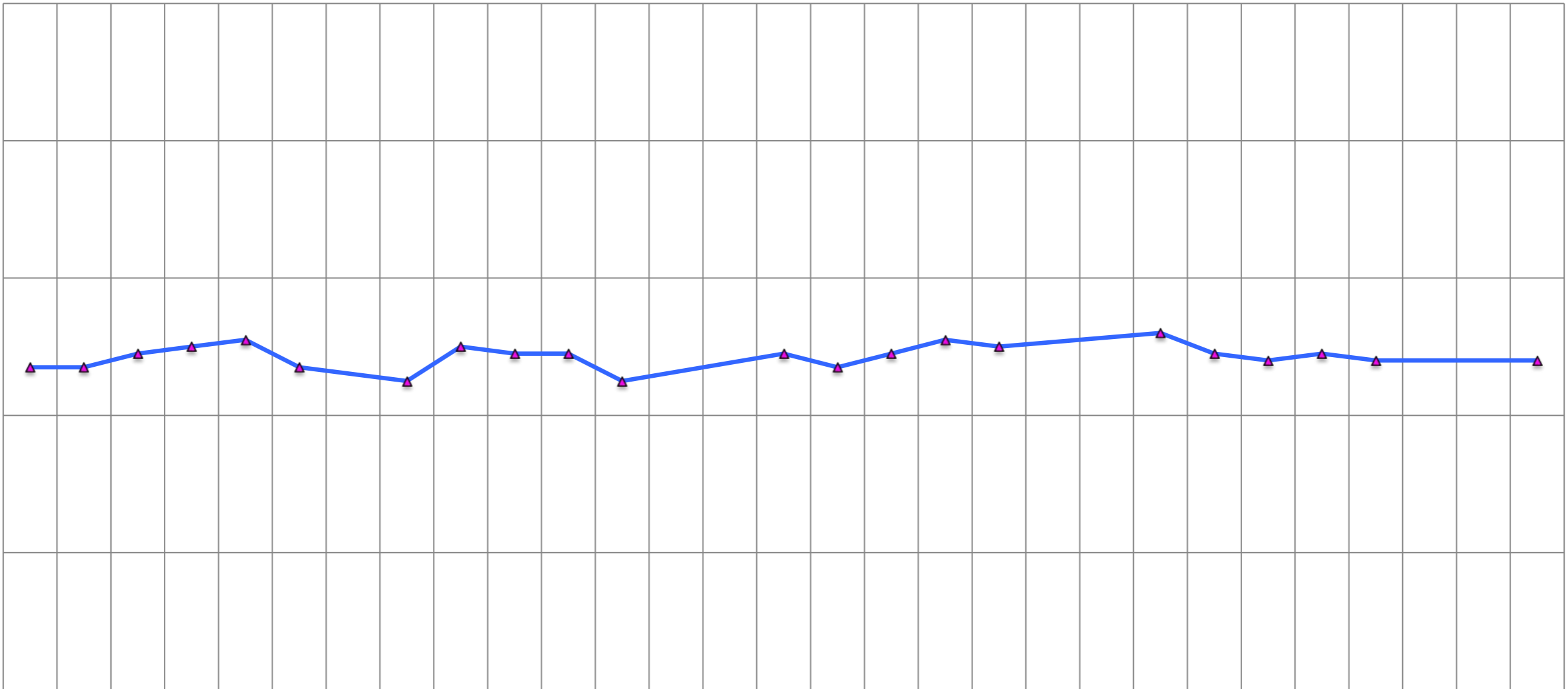
2025/3/30

2025/3/31

Ghosting (%)

(%)

1.00
0.80
0.60
0.40
0.20
0.00



2025/3/3
2025/3/4
2025/3/5
2025/3/6
2025/3/7
2025/3/8
2025/3/9
2025/3/10
2025/3/11
2025/3/12
2025/3/13
2025/3/14
2025/3/15
2025/3/16
2025/3/17
2025/3/18
2025/3/19
2025/3/20
2025/3/21
2025/3/22
2025/3/23
2025/3/24
2025/3/25
2025/3/26
2025/3/27
2025/3/28
2025/3/29
2025/3/30
2025/3/31