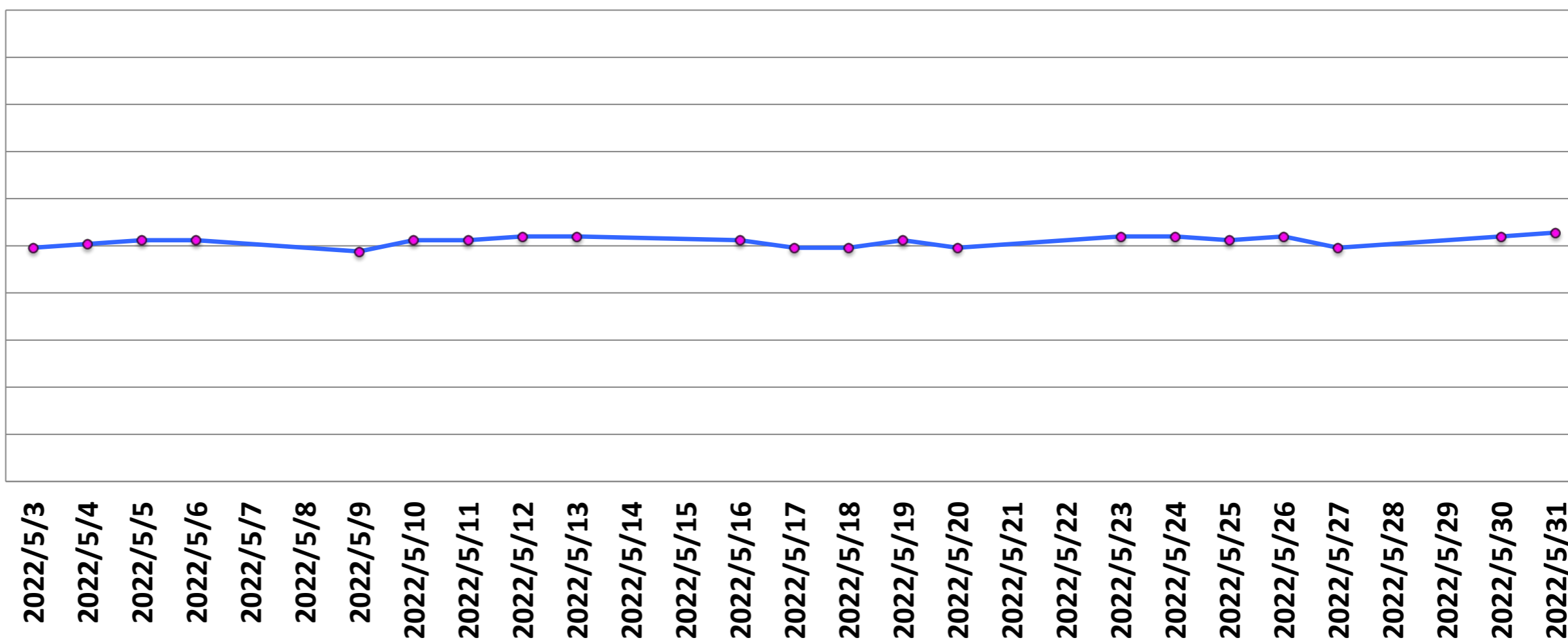


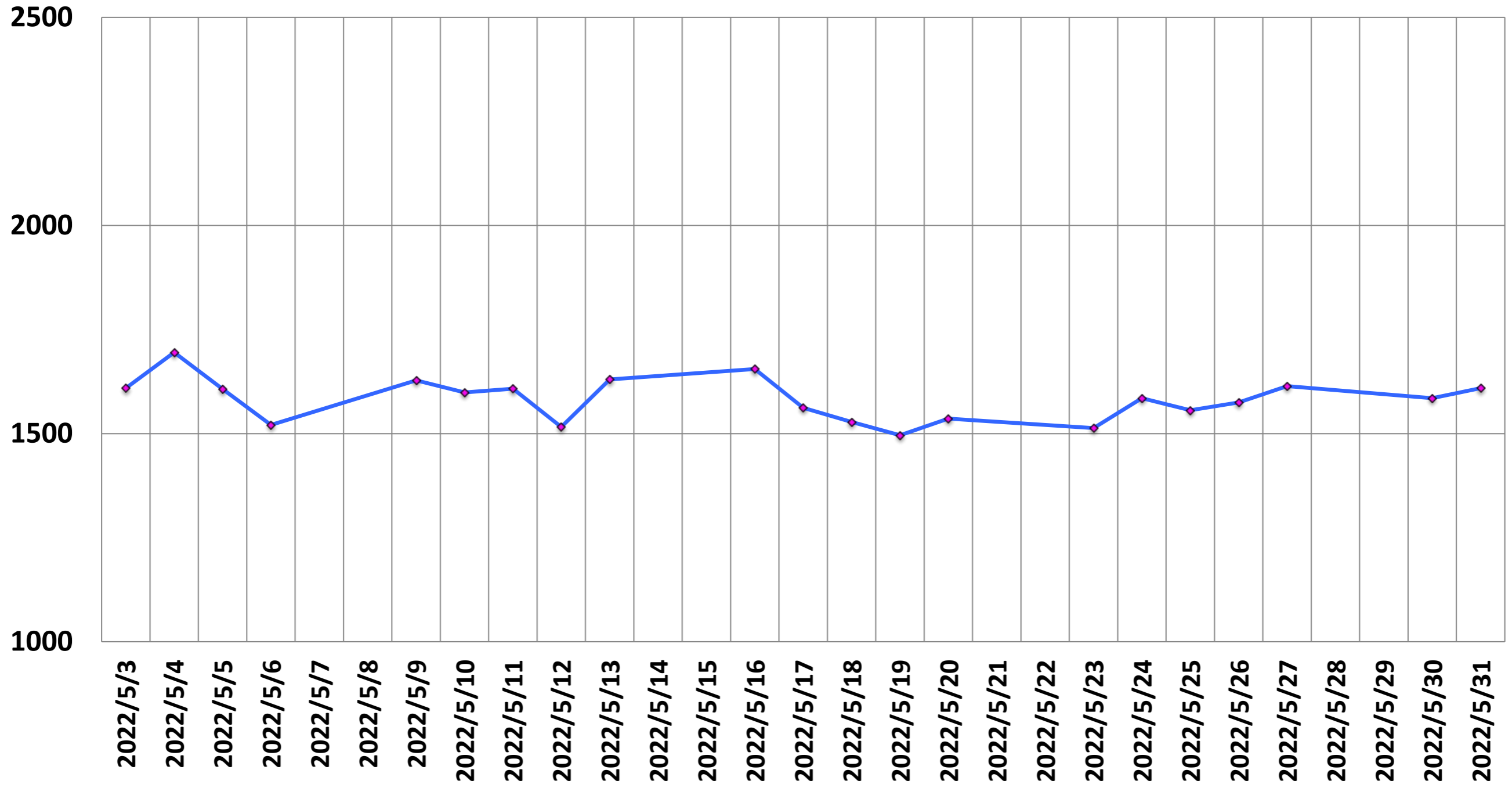
(MHz)

Central Frequency (MHz)

123.2560
123.2559
123.2558
123.2557
123.2556
123.2555
123.2554
123.2553
123.2552
123.2551
123.2550



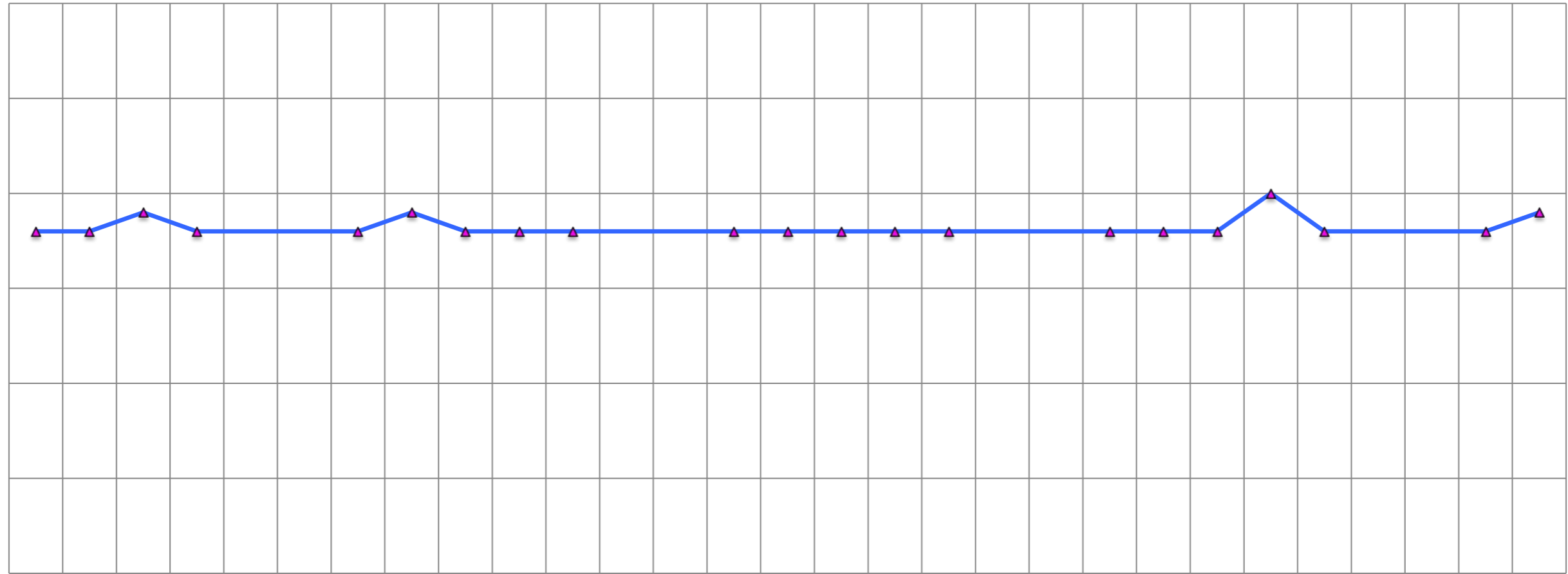
SNR



P-P/mean of single voxel (%)

(%)

0.30
0.25
0.20
0.15
0.10
0.05
0.00

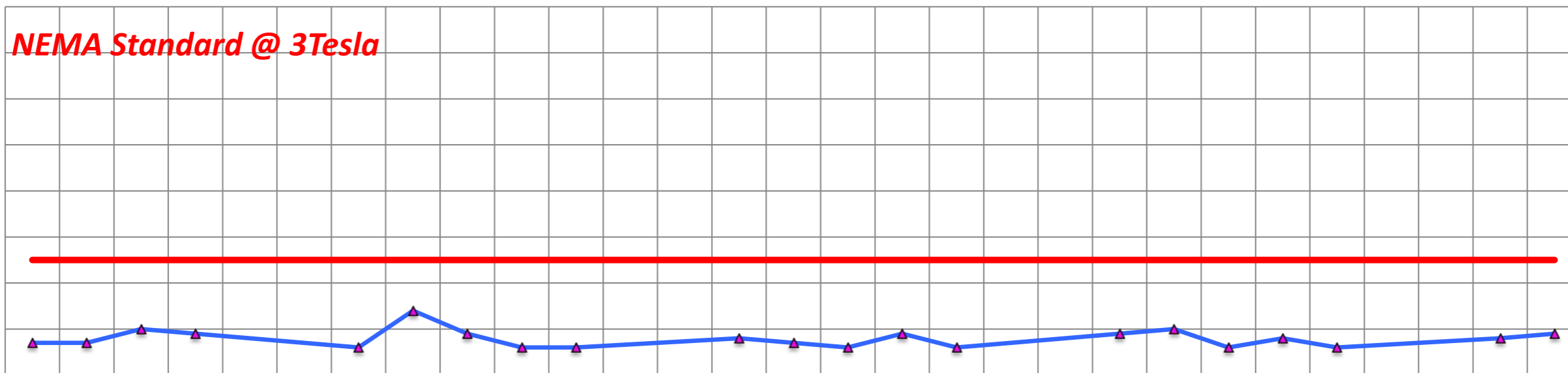


2022/5/3
2022/5/4
2022/5/5
2022/5/6
2022/5/7
2022/5/8
2022/5/9
2022/5/10
2022/5/11
2022/5/12
2022/5/13
2022/5/14
2022/5/15
2022/5/16
2022/5/17
2022/5/18
2022/5/19
2022/5/20
2022/5/21
2022/5/22
2022/5/23
2022/5/24
2022/5/25
2022/5/26
2022/5/27
2022/5/28
2022/5/29
2022/5/30
2022/5/31

p2p/mean (%)

(%)

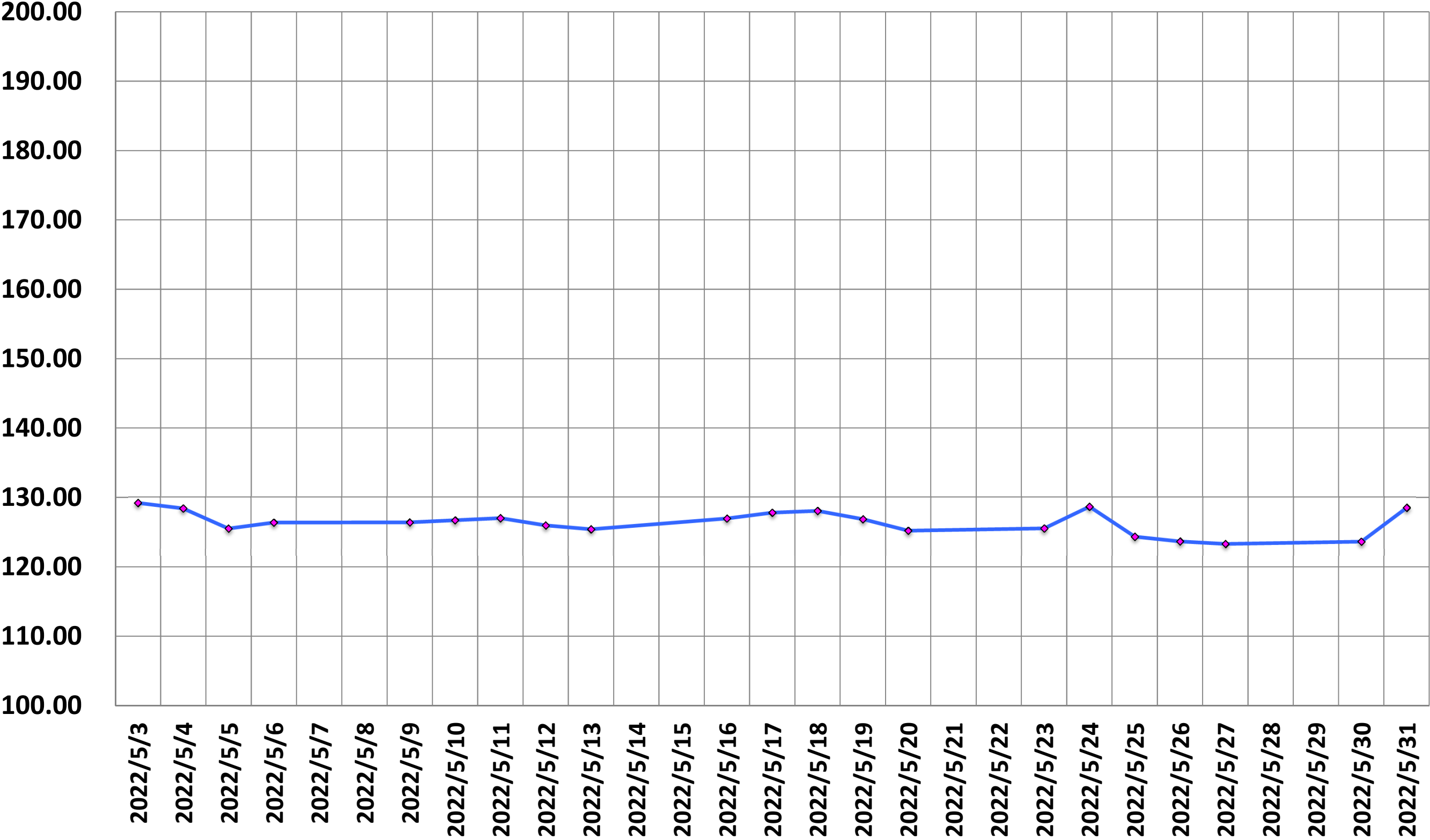
0.8
0.7
0.6
0.5
0.4
0.3
0.2
0.1
0



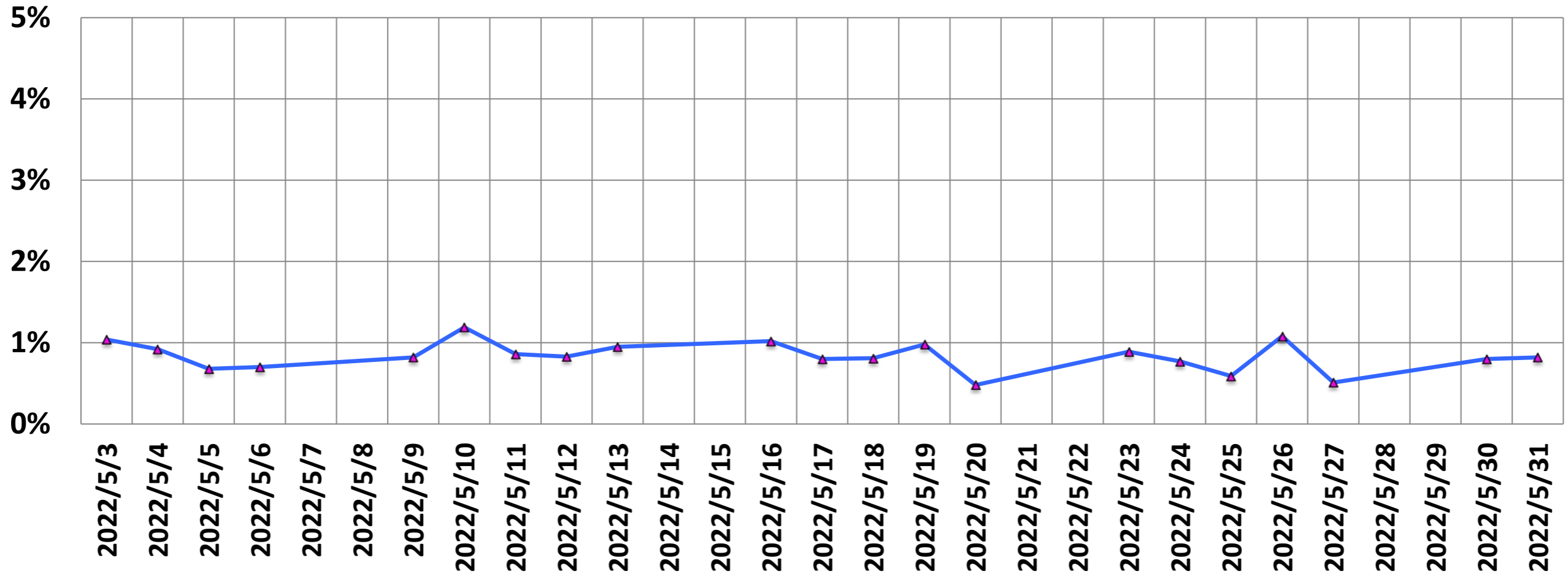
NEMA Standard @ 3Tesla

2022/5/3
2022/5/4
2022/5/5
2022/5/6
2022/5/7
2022/5/8
2022/5/9
2022/5/10
2022/5/11
2022/5/12
2022/5/13
2022/5/14
2022/5/15
2022/5/16
2022/5/17
2022/5/18
2022/5/19
2022/5/20
2022/5/21
2022/5/22
2022/5/23
2022/5/24
2022/5/25
2022/5/26
2022/5/27
2022/5/28
2022/5/29
2022/5/30
2022/5/31

SGR



Drift Rate



He Level (%)

He (%)

95.0

90.0

85.0

80.0

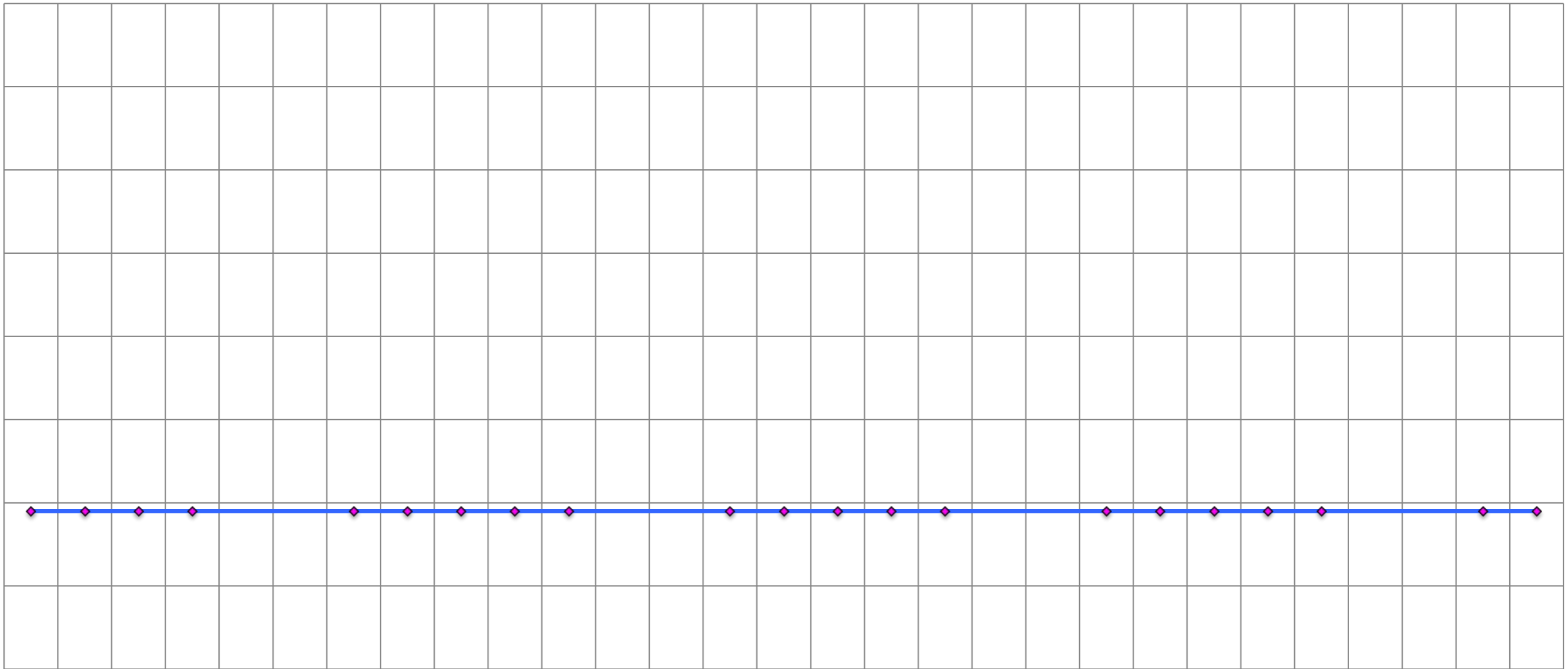
75.0

70.0

65.0

60.0

55.0



2022/5/3

2022/5/4

2022/5/5

2022/5/6

2022/5/7

2022/5/8

2022/5/9

2022/5/10

2022/5/11

2022/5/12

2022/5/13

2022/5/14

2022/5/15

2022/5/16

2022/5/17

2022/5/18

2022/5/19

2022/5/20

2022/5/21

2022/5/22

2022/5/23

2022/5/24

2022/5/25

2022/5/26

2022/5/27

2022/5/28

2022/5/29

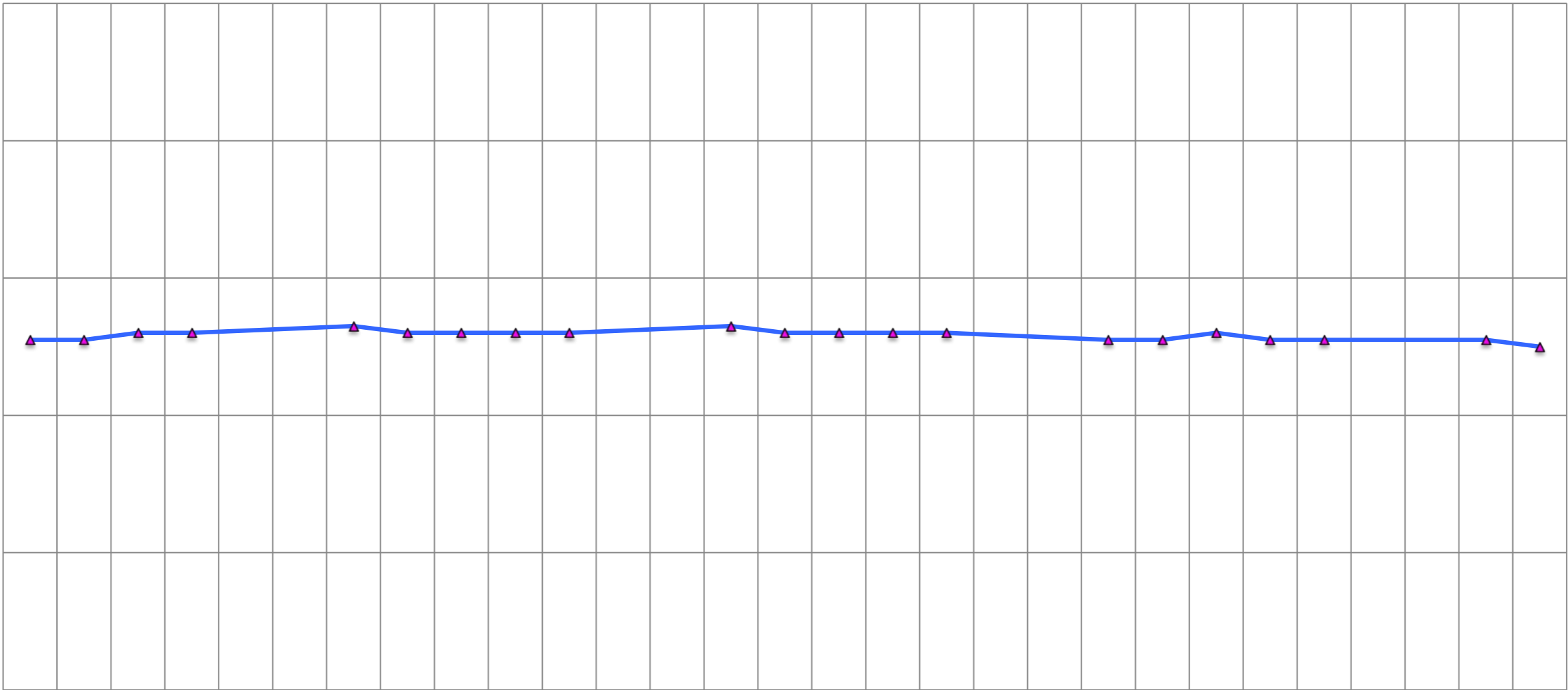
2022/5/30

2022/5/31

Ghosting (%)

(%)

1.00
0.80
0.60
0.40
0.20
0.00



2022/5/3
2022/5/4
2022/5/5
2022/5/6
2022/5/7
2022/5/8
2022/5/9
2022/5/10
2022/5/11
2022/5/12
2022/5/13
2022/5/14
2022/5/15
2022/5/16
2022/5/17
2022/5/18
2022/5/19
2022/5/20
2022/5/21
2022/5/22
2022/5/23
2022/5/24
2022/5/25
2022/5/26
2022/5/27
2022/5/28
2022/5/29
2022/5/30
2022/5/31